

**1 Step 1:** Is it possible the patient encountered a known allergen: Yes (Continue!) No (STOP!)  
 Check all the categories below you or your child are experiencing.

## Severe Symptoms:

**Mental Status:**

- Anxiety
- Confusion
- Feeling of doom



**Face:**

- Swelling of face
- Swelling of tongue



**Throat:**

- Hard to breathe
- Hard to swallow
- Tightness



**Heart:**

- Dizziness
- Faintness
- Paleness
- Weak pulse



**Lungs:**

- Coughing
- Noisy breathing
- Shortness of breath



**Stomach:**

- Severe diarrhea
- Vomiting over and over



**Skin:**

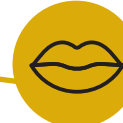
- Rash covering the body
- Redness covering the body

## Mild Symptoms:



**Nose:**

- Itchy
- Runny
- Sneezing



**Mouth:**

- Itchy



**Stomach:**

- Nausea
- Upset stomach



**Skin:**

- Itchy
- A few hives

**2 Step 2:** How many of the categories did you check?

### Circle the severe categories experienced



If any severe categories are checked above:  
Give epinephrine auto-injector

### See back for instructions

Let the person sit up or lie on their side (if vomiting)

If no severe categories are checked:  
 DO NOT give epinephrine



### Circle the mild categories experienced



If more than one mild categories are checked above:  
Give epinephrine auto-injector

### See back for instructions

Let the person sit up or lie on their side (if vomiting)

If one or less mild categories are checked:  
 DO NOT give epinephrine

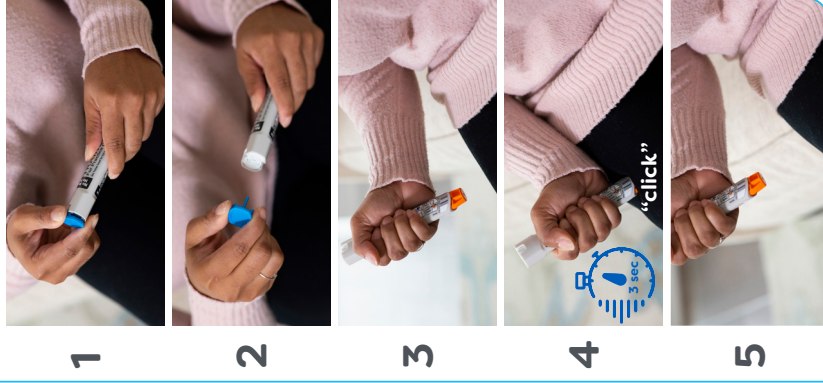


**3 Step 3:** Monitor your child closely

Call 911. If symptoms worsen or do not improve after 5 minutes, give epinephrine again while waiting for medical help to arrive.



## EpiPen and EpiPen Jr.



## Amneal



## SYMJEPI



## AUVI-Q



## Teva



Epinephrine is a lifesaving medication used for anaphylactic (severe allergic) reactions and can be given through clothes.

**Side effects:** shakiness/tremors, lightheadedness, increased heart rate, anxiety, nausea/vomiting, sweating, pale skin

**Storage:** room temperature, keep out of heat and cold (avoid leaving in car)

**How to dispose of injector:** the injector may be disposed of in a sharps container or a hard sided container like a laundry detergent container prior to throwing in the trash

DISCLAIMER: The content contained herein is meant to promote the general understanding of the health topic(s) described in this publication and is for informational purposes only. Such information does not serve as a substitute for a healthcare professional's clinical training, experience, or judgment. Individuals and their families should not use such information as a substitute for professional medical, therapeutic, or healthcare advice and counseling.

NO WARRANTY WHATSOEVER, WHETHER EXPRESS OR IMPLIED BY LAW, IS MADE WITH RESPECT TO THE CONTENT.