



QR code
for mobile view

Inclusion criteria:

- Observer reports a sudden, brief, now resolved event including ≥ 1 of the following:
 - Cyanosis or pallor
 - Absent, decreased, or irregular breathing
 - Marked change in tone (hyper- or hypotonia)
 - Altered level of consciousness
- No known explanation for qualifying event

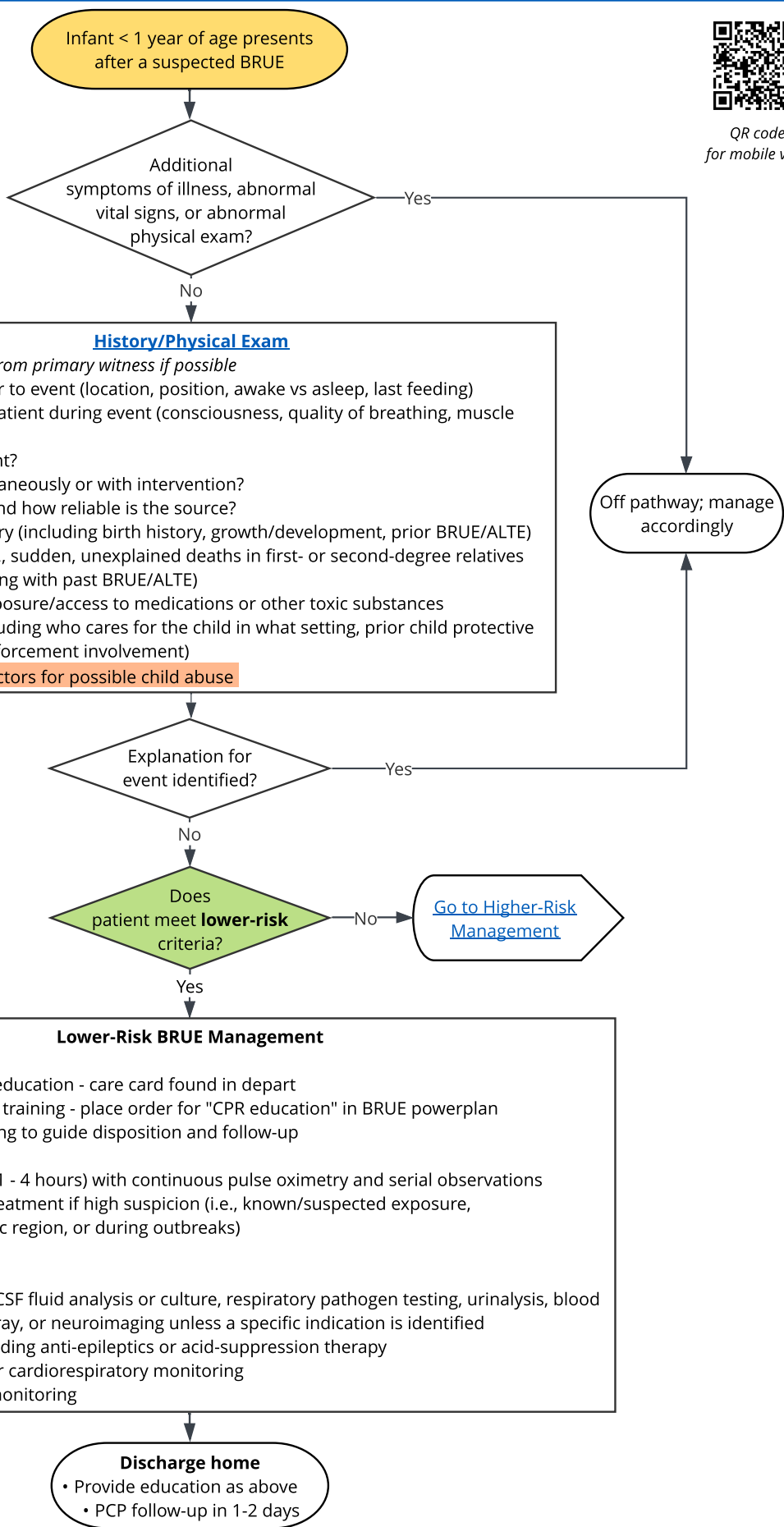
Considerations for possible child abuse:

- Multiple or changing versions of event history
- Event circumstances inconsistent with child's developmental stage
- Unexplained bruising
- Torn frenulum
- For additional considerations see "Child Abuse Toolkit" on Scope

Lower-Risk BRUE criteria:

- Age > 60 days
- Gestational age at birth ≥ 32 weeks AND corrected gestational age ≥ 45 weeks
- No history of BRUE
- Single event
- Duration of event < 1 minute
- No CPR required by trained medical provider
- No concerning historical features or physical exam findings ([concerns found here](#))

Abbreviations:
 ALTE = apparent life-threatening event
 BRUE = brief resolved unexplained event
 ECG = electrocardiogram
 EEG = electroencephalogram

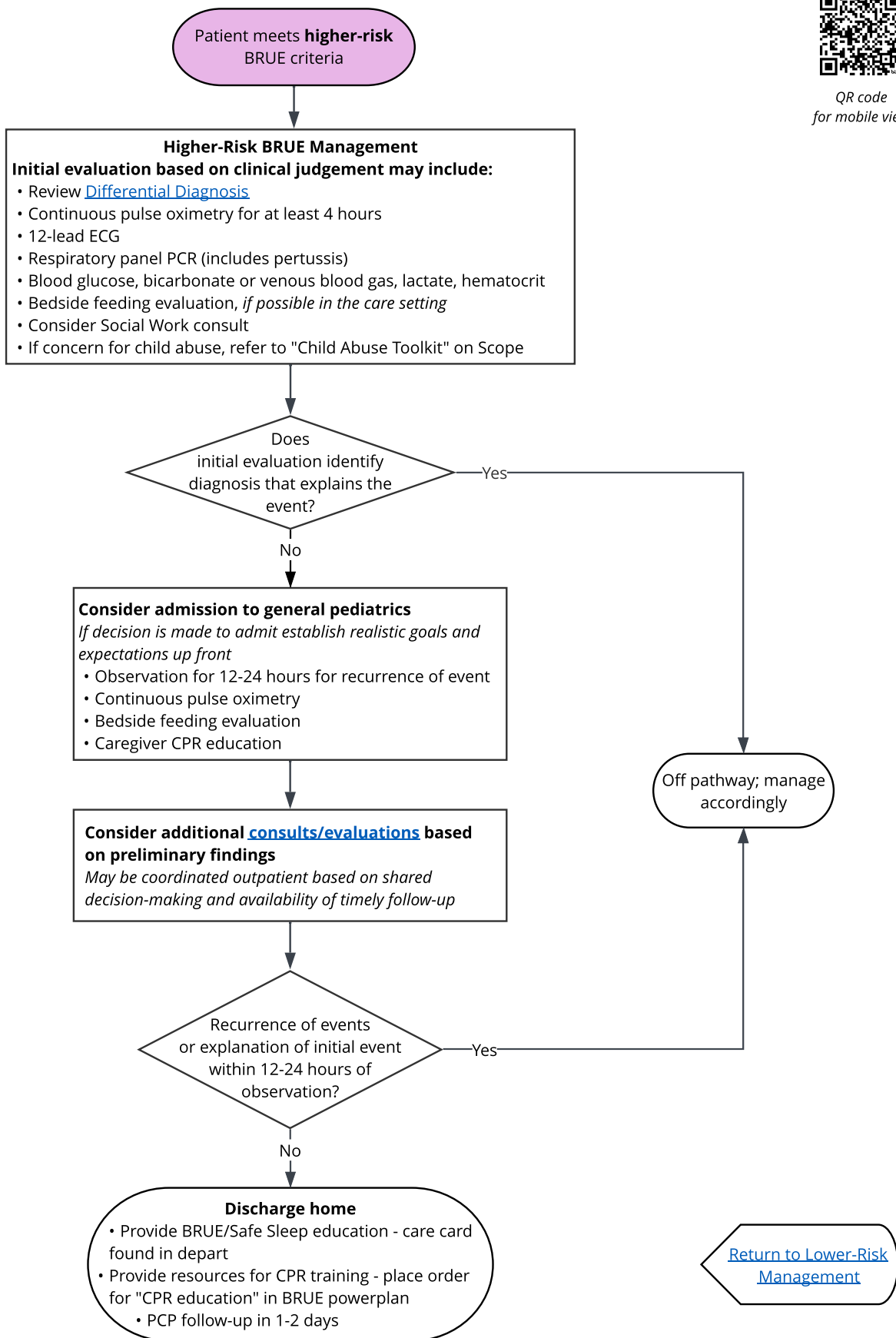




QR code
for mobile view

Higher-Risk BRUE criteria:

- Age ≤ 60 days
- Gestational age at birth < 32 weeks AND corrected gestational age < 45 weeks
- Recurrent event or occurring in clusters
- Duration of event ≥ 1 minute
- CPR required by trained medical provider
- Concerning historical features or physical exam findings ([concerns found here](#))



Abbreviations:
 ALTE = apparent life-threatening event
 BRUE = brief resolved unexplained event
 ECG = electrocardiogram