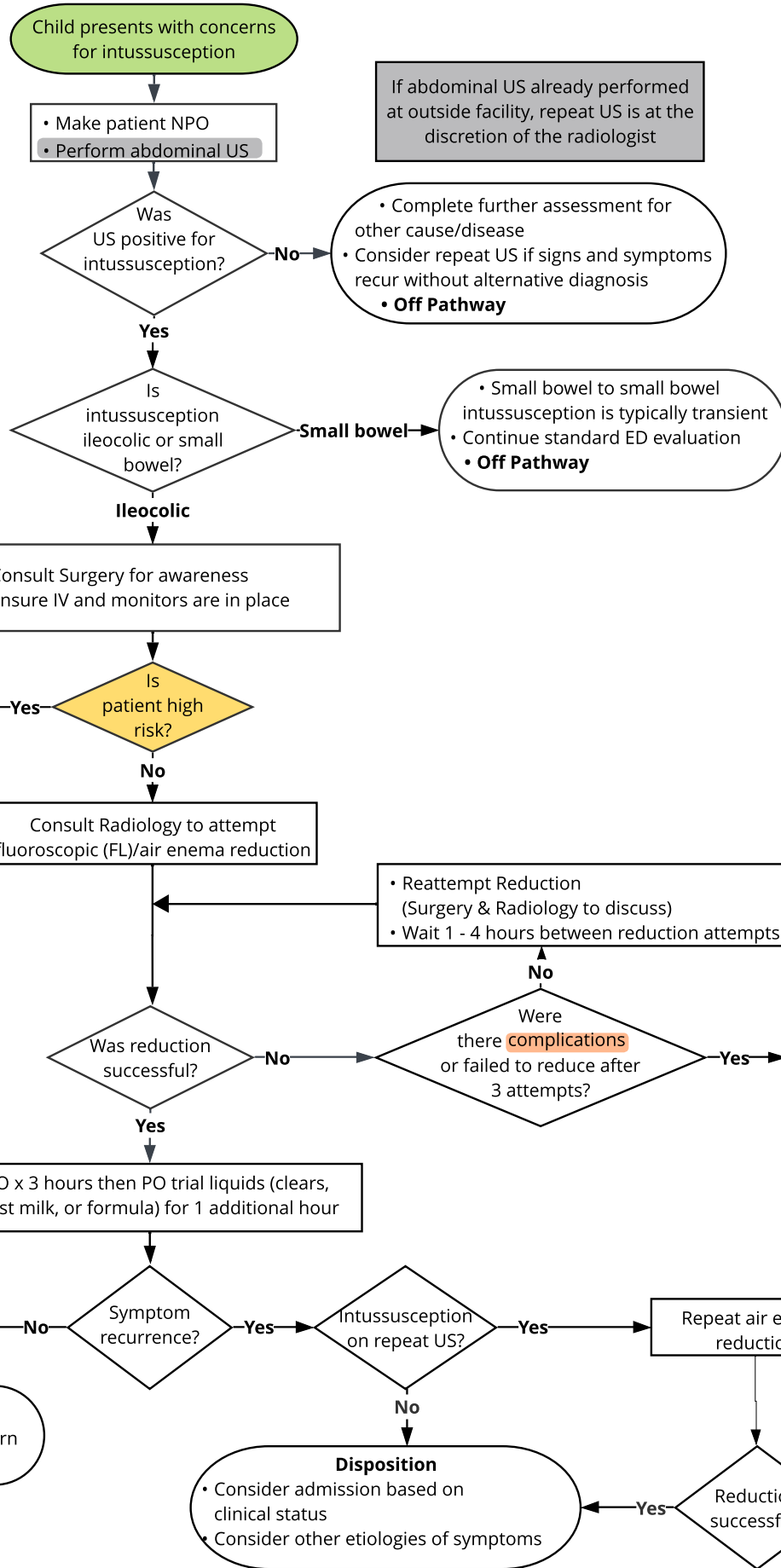




QR code for mobile view

- Inclusion criteria:**
- Patient < 18 years
- Exclusion criteria:**
- Hemodynamically unstable
  - Concern for sepsis (refer to the [Sepsis Clinical Pathway](#))



- Signs & Symptoms of Intussusception**
- Intermittent distress
  - Vomiting
  - Unexplained lethargy
  - Fussiness
  - Drawing legs up toward abdomen
  - Bloody stools
  - Palpable sausage like mass in right lower quadrant

- High Risk Patients**
- < 10 months of age
  - Lethargy
  - Signs of shock
  - Peritonitis
  - Small bowel obstruction
  - Signs and symptoms have been present > 48 hrs
  - US findings: ascites, intraloop fluid,
  - Free air on US or X-ray
  - Intra-abdominal surgery < 8 weeks

- Complications**
- Perforation
  - Tension pneumoperitoneum
  - Hemodynamic instability

If abdominal US already performed at outside facility, repeat US is at the discretion of the radiologist