

AirDuo Respiclick



AirDuo Respiclick® (fluticasone & salmeterol)

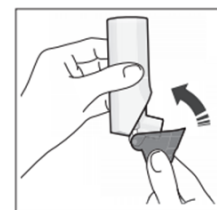
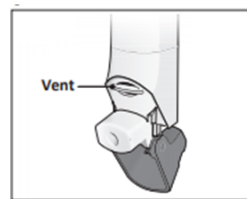
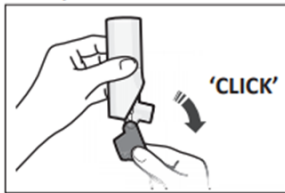
55/14mcg (low dose light orange label)

113/14mcg (medium dose (green label)

232/14mcg (high dose) (dark orange label)



Medicine	Need a spacer?	My dose
Controller (dry powder inhaler)	No	Check Asthma Action Plan



1. Holding RespiClick upright, open red cap until you hear a click
2. Exhale away from device
3. Place mouth over mouthpiece with a tight seal (do not block vent with mouth or fingers)
4. Inhale quickly and deeply
5. Hold breath as long as you can, around 10 seconds
6. Remove RespiClick from mouth and exhale slowly away from device.
7. Place cap back on until it clicks closed
8. Steps 1-7 for each dose



Use the camera on your phone to scan this QR code for the AirDuo Website:

There is information about:

- ◆ How to use AirDuo Respiclick
 - ◆ Click “menu” then click “Using Airduo”
- ◆ To save money
 - ◆ Click “menu” then Click “Low cost”